

Location and Timing by way of Solar Maps

By Bert Fannin

Solar Maps can be used, not only to show where planets fall angular on the earth, but in a dynamic way to show when they fall angular on the earth. This very useful in mundane forecasting efforts.

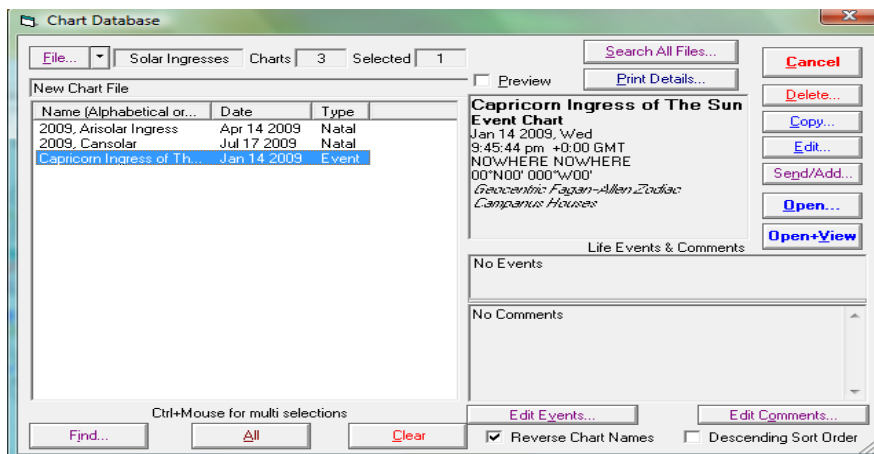
As an example, we will use the 2009 Capsolar Ingress. This should be set up in Solar Fire for the coordinates of Greenwich, which is the base reference point for Solar Maps. The following is the necessary information:

Date	01/14/09
UT	21:46:00
Location	NOWHERE
Longitude	0°N00'
Latitude	0°W00'
RAMC GM	05:23:57
RAAS	19:47:13
GHAS	09:36:44

Table 1: 2009 Capsolar Ingress set for Greenwich Meridian

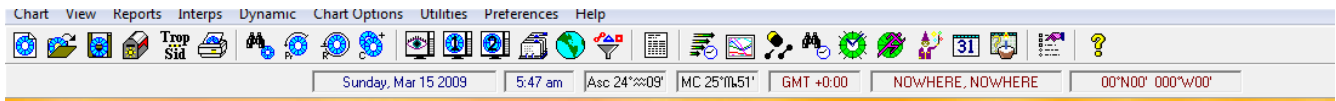
I Progressed Solar Planets on location

1. Call up the Ingress map in Solar Fire:

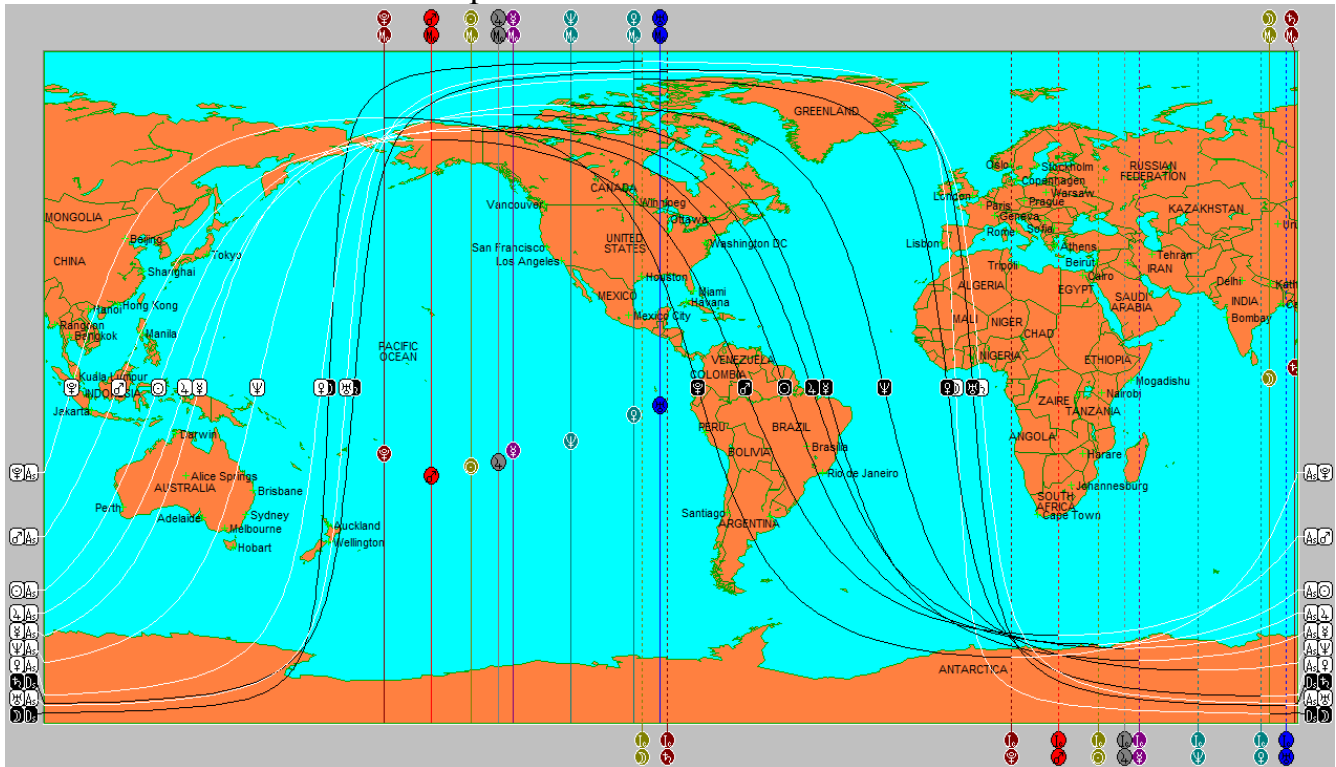


The results will be the main Solar Fire Screen

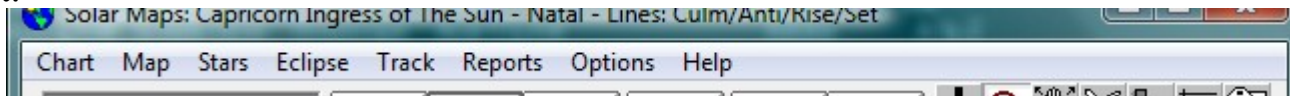
Click on the gob Icon to bring up Solar Maps with this chart



The result will be the Solar Map for this chart:



Use the Map selection on the tool bar at the top to chose the location you wish to look at:



Chose the Map option from above tool bar. This will give the map selection tree.



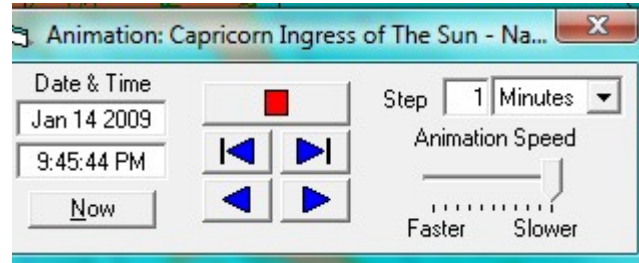
Click on the highlighted option

The results will be the map of your choosing.

Please note that the Solar Neptune is east of San Francisco. That means that by diurnal rotation the Neptune line will move to San Francisco, some time during the ingress year. The question is when? For this, we must be able to move the map. Chose the animation option in Solar Maps.

Chart	Map	Stars	Eclipse	Track	Reports	Op
AstroClock Off						Ctrl+A
New Chart...						Ctrl+N
Select Chart...						Ctrl+C
Open Chart File...						Ctrl+O
Save Chart...						Ctrl+S
Clear Chart						Shift+Del
Subsidiary Chart...						Ctrl+U
Animate Chart...						Ctrl+M
View Local Horizon Chart						
View Chart Wheel						
Relocate to...						Ctrl+R
Displayed Lines...						Ctrl+L
Displayed Points...						Ctrl+P
Paran Point...						
Point Colors...						
Zodiac						▶
Day/Night Shading Off						Ctrl+D
Print...						F11
Copy image to...						
Copy text details to clipboard						
Exit						

Or hit Ctrl M. Chose Animation. The result will be the animation box that will appear on the screen:



This box can be dragged around the scree as needed. Just use the mouse.

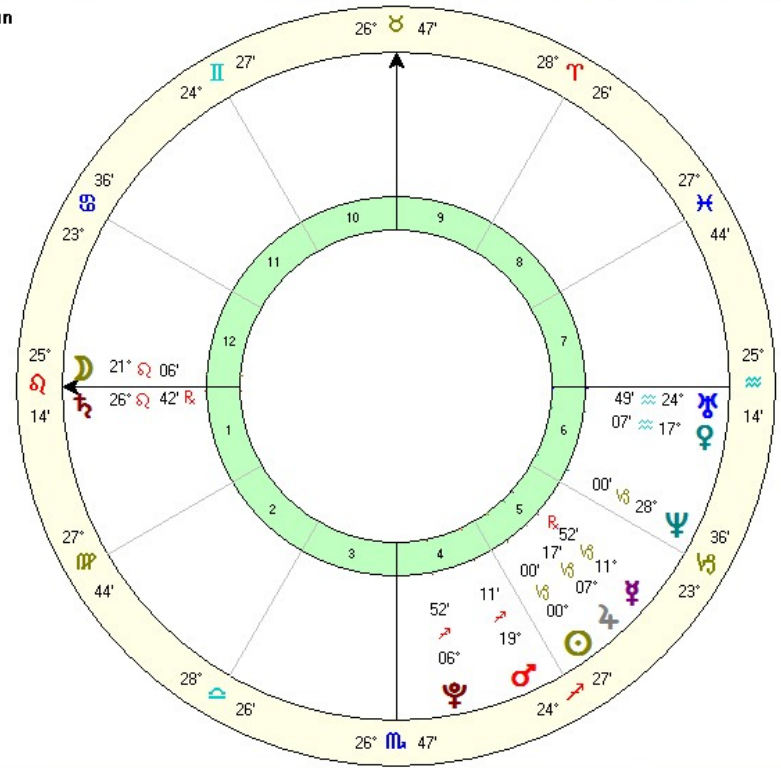
You can see that the date and time are indicated as is the steps by which the animation is accomplished. This should be set to 4 minutes to start with. This is the approximate amount that the line moves each day. This is in terms of UT. Use the upper right arrow to move the line. As you click this button, you will see the angularity lines move westward by the amount indicated in the step box. Keep stepping until the line passes west of the target. Then use the upper right button to step back one step. Then adjust the step to 30s. Repeat until the line moves past target. Each time, step the value of minutes or seconds as the case may be. Repeat until the line is centered right over the city or location you wish it to be. If you need to enlarge the view so as to see the target, use the Magfying glass icon in the top tool bar. Then use the mouse to draw down the area. It will area. Once done you should return to the measure icon right next to it. This is in the form of a comps. In no case should you remain in size mode past you resizing. While the animation box is up, you can not use another function, so you need to hit in the right corner to get rid if it. But you can call it back, as above. Do so, and take a look at the Date and Time box. Note

this value. This is the progressed Date and Time, such as to give an SQ progression with the Neptune line over San Francisco. These values should be carefully noted.

Next get out of solar maps and return to Solar fire, which hopefully, you have simply minimized. Bring up the Map on the screen so that it looks like this:

Capricorn Ingress of The Sun

Event Chart
 Jan 14 2009, Wed
 9:45:44 pm GMT +0:00
 NOWHERE, NOWHERE
 00°N00° 000°W00°
*Geocentric:
 Fagan-Allen
 Campanus
 Mean Node*



Uni 2

Wheel ▾

ReDraw

Swap

Rectify...

Save...

Reports...

Transits...

Copy/Send...

Print...

Pages...

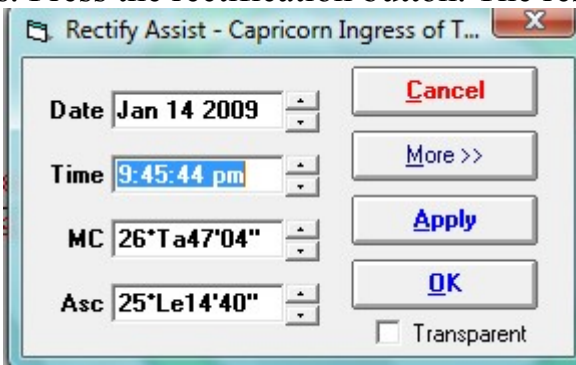
Charts...

Wheel Style...

Quit

⏏ ⏴ ⏵

At the right you see a series of buttons. Press the rectification button. The result will be the rectification window.



In the Time box change the time to the progressed value derived from moving the line. If the date as advanced as a result of passing midnight, then see that this is changed as well. Then hit the apply box and then OK. Return to the main display screen and chose the Report box. The report will be appear on the screen: Or hit Ctrl V

*** CHART ANALYSIS REPORT ***

Capricorn Ingress of The Sun - Event Chart

DeltaT = +65s; ET = 9:46:49 pm Jan 14 2009; JDE = 2454846.407523
 ST(0°) = 05:23:40; LST = 05:23:40; Ob = 23°26'17"; Eq.Time = -9m16s
 Ayanamsa of date = 05°Pi07'46"; SVP 1900 = 06°Pi39'21"
 ACD(0h) = Feb 17 2009; ACD(12h) = Aug 19 2009

CHART ANGLES

Ascendant 25°♍14'40" Midheaven 26°♄47'04"
 Co-Asc. 05°♁07'46" Polar Asc. 25°♁14'40"

HOUSE CUSPS (Campanus)

1 25°♍14'40" 4 26°♄47'04" 7 25°♁14'40" 10 26°♄47'04"
 2 27°♁44'39" 5 24°♃27'11" 8 27°♁44'39" 11 24°♁27'11"
 3 28°♂26'11" 6 23°♃36'46" 9 28°♁26'11" 12 23°♁36'46"

CHART POINTS

Point	Longitude	Travel	Latitude	Rt.Asc.	Decl.	Azi(0°N)	Alti.
☽	21°♍06'46"	+13°50'	-03°09'	165°52'	+02°36'	087°22'	+05°02'
☉	00°♃00'00"	+01°01'	-00°00'	296°48'	-21°09'	236°34'	-49°04'
♀	11°♃52'54" R	-37°29'	+01°46'	308°40'	-16°51'	247°44'	-40°02'
♀	17°♁07'16"	+01°01'	-00°22'	343°32'	-07°24'	262°31'	-07°19'
♂	19°♃11'00"	+45°43'	-00°48'	285°21'	-23°30'	223°33'	-56°36'
♄	07°♃17'43"	+14°07"	-00°25'	304°31'	-20°05'	242°03'	-42°50'
♂	26°♍42'52" R	-01°31"	+02°06'	173°06'	+05°16'	084°43'	-02°10'
♃	24°♁49'54"	+02°17"	-00°44'	350°49'	-04°45'	265°14'	-00°05'
♃	28°♃00'46"	+02°03"	-00°21'	325°20'	-14°13'	254°18'	-24°43'
♀	06°♃52'41"	+02°03"	+05°40'	271°49'	-17°44'	210°36'	-69°15'

LUNAR PHASE

Angle: +231°06' Phase: Disseminating (6th of 8, and 18th of 28)

SIGN MODALITIES

Cardinal	☉ ♀ ♄ ♃	Total Points: 4	Weighted Score: 7
Fixed	♄ ♀ ♂ ♃	Total Points: 4	Weighted Score: 7
Mutable	♂ ♃	Total Points: 2	Weighted Score: 3

Note the value ST(0hr) at the top of the report. This is the SQ RAMC at GM, when the line is over San Francisco. Take this value out and return to the map.

This is where the math begins. The Progressed date and time for value for Neptune over San Francisco is 1/14/2009 at 22:12:49 UT and the resulting RAMC (0h ST) is:05:50:50

05:50:50 RAMC (GM)
-09:36:44 GHAS
23:36:41 RAAS TX Sun for Crossing

To ascertain the exact date and time that this Solar Neptune will be over San Francisco, look up the RAAS TX Sun in the attached 2009 RAAS Ephemeris, and interpolate for exact date and time

1

3/13/ 9 23h:32m:36s
3/14/ 9 23h:36m:16s
3/15/ 9 23h:39m:56s
3/16/ 9 23h:43m:36s

3/15/2009 23:39:56
3/14/2009 - 23:36:16
03:40 24 hr motion= 3.6667

23:36:41 RAAS crossing
-23:36:16 0h 3/14/2009
0: 25 Motion to Go= 0.4167

For exact UT $0.4167/3.6667 \times 24 \text{ hrs} = 02:43:38 \text{ UT } 3/14/2009 \text{ or } 7:43:38 \text{ pm PDT } 3/13/2009$

II Transits Planets On SQ angles for Location

It is also important to check to see if there are any Simultaneous² transits. This can be ascertained by revisiting SQ chart in Solar Maps.

When the desired map is up in Solar Maps, chose the following option under file, in the overhead menu bar.

² That is transits that aper on the angles of the SQ angles. These are the transits planets referred to the SQ. Specifically referred to the SQ RAMC Greenwich.. These are not simply line crossings to a transit chart, but with reference to a specific SQ chart.

Chart	Map	Stars	Eclipse	Track	Reports	Op
AstroClock Off						Ctrl+A
New Chart...						Ctrl+N
Select Chart...						Ctrl+C
Open Chart File...						Ctrl+O
Save Chart...						Ctrl+S
Clear Chart						Shift+Del
Subsidiary Chart...						Ctrl+U
Animate Chart...						Ctrl+M
View Local Horizon Chart						
View Chart Wheel						
Relocate to...						Ctrl+R
Displayed Lines...						Ctrl+L
Displayed Points...						Ctrl+P
Paran Point...						
Point Colors...						
Zodiac						▶
Day/Night Shading Off						Ctrl+D
Print...						F11
Copy image to...						
Copy text details to clipboard						
Exit						

or hit Ctrl + U. This will bring up the Subsidiary Chart option.



Then hit OK. The result will be an Astro-map for your desired location with the current transits to the SQ angle.

As can be seen from the resulting map, there are no transits to San Francisco, and the Neptune has moved eastward, by transit motion.

III Transit Latitude Parans

There is one more thing that needs to be checked. That is any latitude parans.³ Here too Solar Maps will give these lines. Revisit the overhead menu bar and choose the Lines button. The result will be the lines option box.

³ That is the horizontal projection of any two planets that cross angles at the same time. Because of the diurnal rotation of the earth, every such paran will sweep over every meridian during a 24 hour period, at the latitude of crossing. Whether the paran is as potent as a projection, as at the exact point of crossing is an open question, subject to further research. The effort is on going.

Select Lines

Planet/Angle Lines

Culminate In Mundo
 Anticulminate Zodiacal
 Rise Add Aspects >
 Set Add Midpoints

Local Space Lines

Planet Directions Keep original azimuths after relocation
 Local Horizon
 Local Houses

Celestial Lines

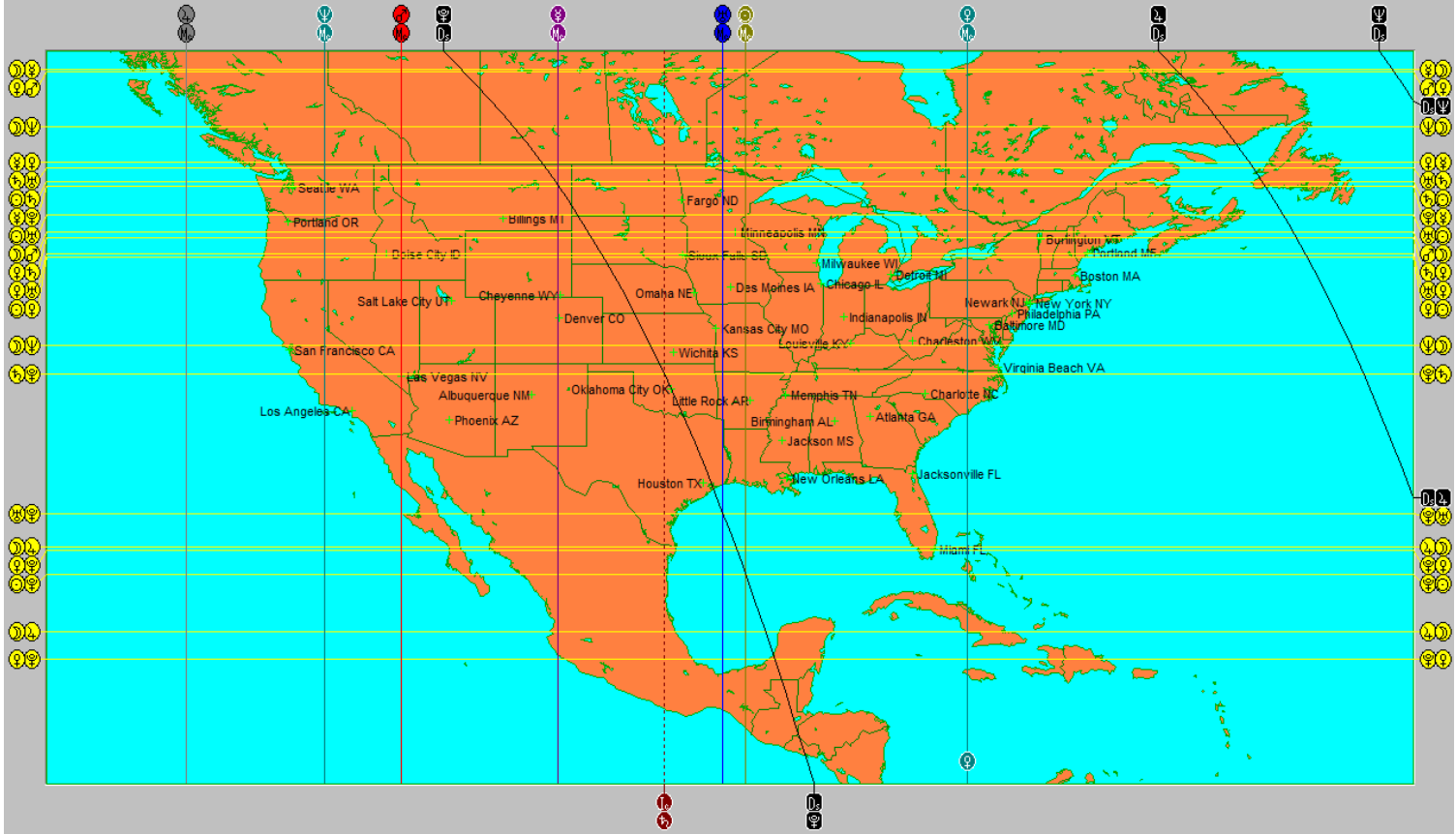
Ecliptic
 Zodiacal Signs

Paran Lines

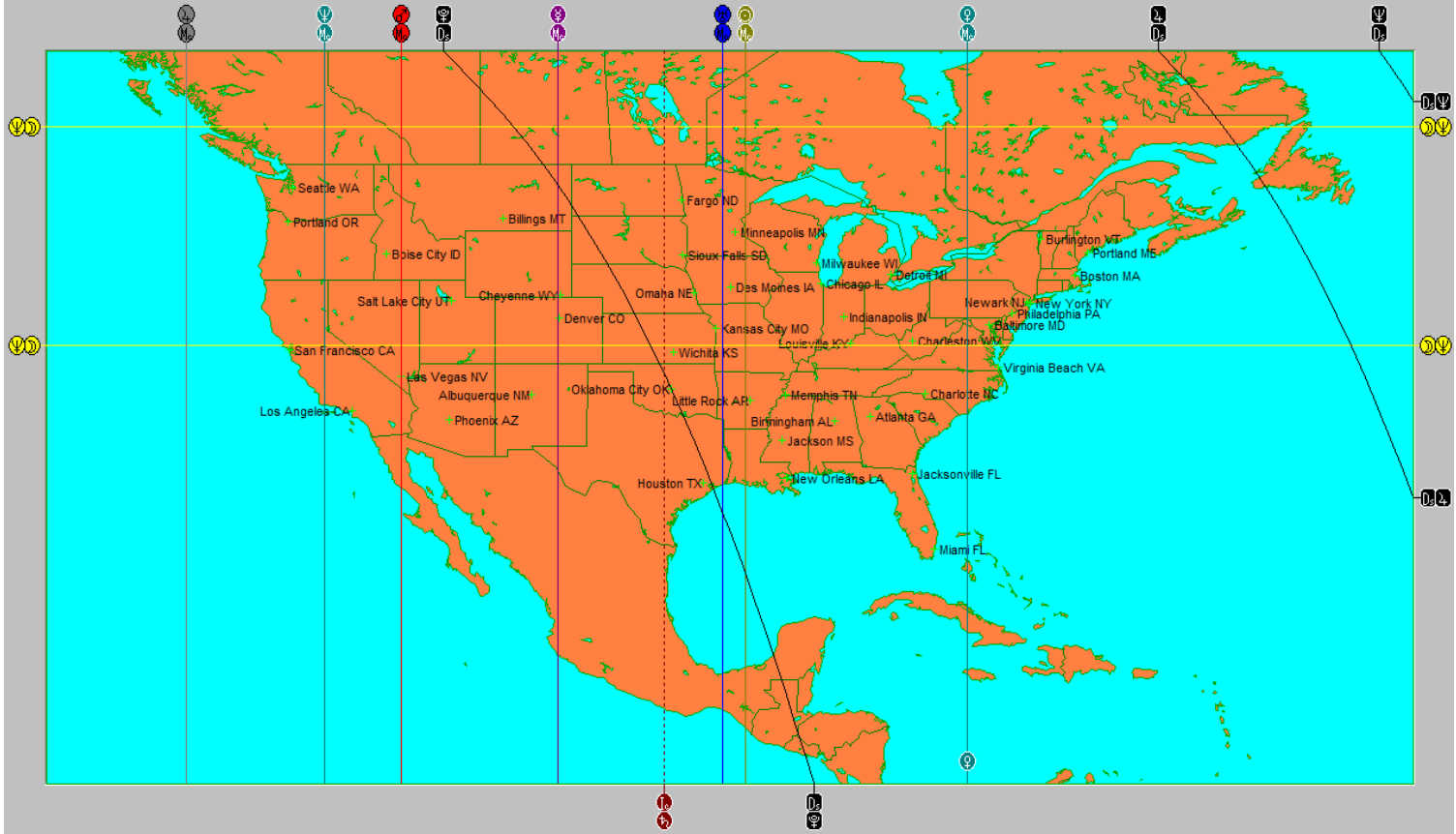
Rise/Set to Rise/Set Limit of Lat
 Rise/Set to Culm/Anti ± 60°
 Parans only of **The Moon**
 All Parans

OK **Cancel**

Make sure that the paran lines boxes are both checked and that the All Parans radio button is selected. The result will be the same chart, but this time will all latitude parans shown as horizontal yellow lines.



As can be seen, from the resulting map, there are several transiting latitude parans running through California. However the closest and worrisome is the Moon/Neptune. To concentrate on this latitude paran and eliminate some of the distraction, return to the line menu. This time use the Parans only button. Then in the button marked with the planets name (Default is Moon) click. The result will be a planet choice window. Only one can be highlighted. Chose Neptune and hit Apply. The rest of the latitude paran lines are eliminated and only those of Neptune remain.



As can be seen from the resulting map, the line is very close to San Francisco, if not dead on. To find out how close you will need to use the Distance (Campus icon) and Magnification function (Magnifying Glass Icon) on the top menu bar of Solar Maps.



Use the Magnification tool and then right click the mouse button and run over the area of San Francisco. The map focus on this area. Then click on the distance tool. Place the mouse curer on San Francisco and right click the mouse button. Move the mouse to the line. You will see a red line from the point of organ to the paran line.

Select Lines

Planet/Angle Lines

Culminate In Mundo
 Anticulminate Zodiacal
 Rise Add Aspects >
 Set Add Midpoints

Local Space Lines

Planet Directions Keep original azimuths after relocation
 Local Horizon
 Local Houses

Celestial Lines

Ecliptic
 Zodiacal Signs

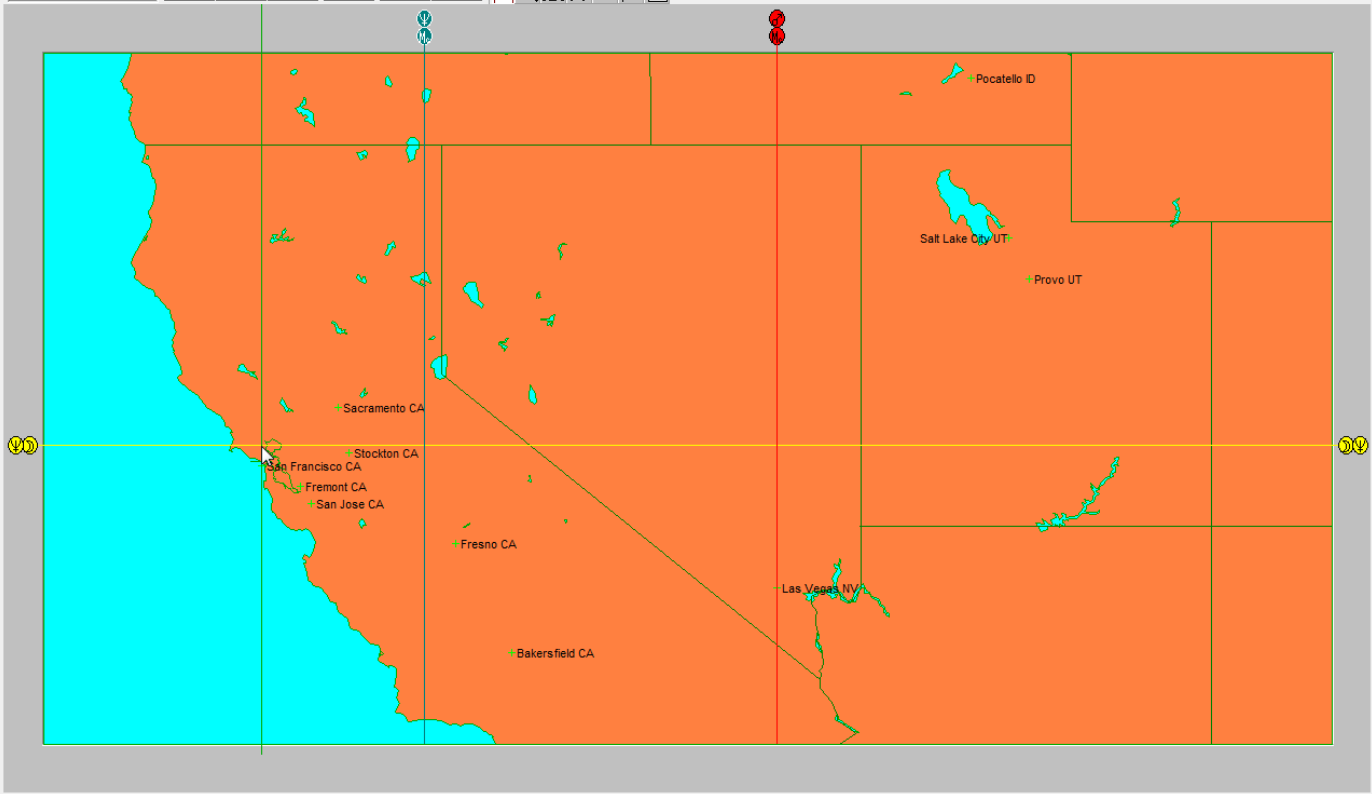
Paran Lines

Rise/Set to Rise/Set Limit of Lat
 Rise/Set to Culm/Anti ± 60°
 Parans only of: **The Moon**
 All Parans

OK
Cancel

0°12' 22km 13mi

Chart Map Eclipse Lines Redraw Prev [Navigation icons]



This magnified map, shows that the line is very close, though slightly north of San Francisco, and closer to Stockton California. At the top of the map, in the black area the exact distance from point of origin to target is shown in ° ' " Km and Miles. The degree value is what is most important. In this case $0^{\circ} 17'$ is about 20 miles or 24 clicks at the latitude of San Francisco.⁴ This is quite close enough, combined with the progressed Neptune crossing to be effective.

Bert Fannin

Location and Timing Astrology

⁴ The relation between distance and arc will vary with the latitude of location, due to the earth's elongated shape.

